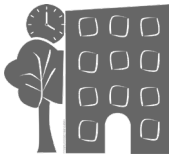


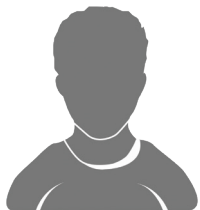
# Evidence of Theme

LESSONS TAKE TIME TO LEARN. THUS, THEME IS HINTED AT ACROSS THE WHOLE TEXT AND WITHIN THE STORY ELEMENTS.



## THE SETTING

has impacted the character before the story ever starts. His beliefs, thoughts, goals, and choices are a byproduct of his environment.



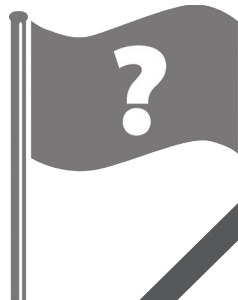
## THE MAIN CHARACTER'S

actions, thoughts, words, and feelings at the beginning won't mean much until compared to his actions at the end.

## THE TYPE OF

**CONFLICT** hints at one theme.

- A conflict with himself will have an "about me" theme.
- A conflict with someone else will have an "about others" theme.
- A conflict with a circumstance or situation will have an "about life" theme.



**EVERY EVENT, EPISODE, & SCENE** is an obstacle for the character— until he adapts or alters his perception of the truth.

**SUBTLE SHAPING OF** character actions, thoughts, words, and feelings occurs in the middle. These changes are more obvious in short text, since the rising action is less. In longer texts, these subtle shifts are embedded within every conversation, choice, & action.



**SUBPLOTS** are impacted by the main character's lack of growth or change. Identify what's not going right for the other characters and how the main character is involved.

## STYLE & AUTHOR'S CRAFT

Well-placed character ahas, multiple-meaning symbolism, & powerful one-liners are all intentional. They all hint at the theme.



**THE METHOD OF SOLUTION** hints at the theme.

- Someone helped
- Something changed
- Character thinking changed

**THE FALLING ACTION** reveals the new and improved character— his new actions, new thoughts, new words, and new feelings.

