

Where do you think this photograph takes place?



Where do you think this photograph takes place?



Where do you think this photograph takes place?

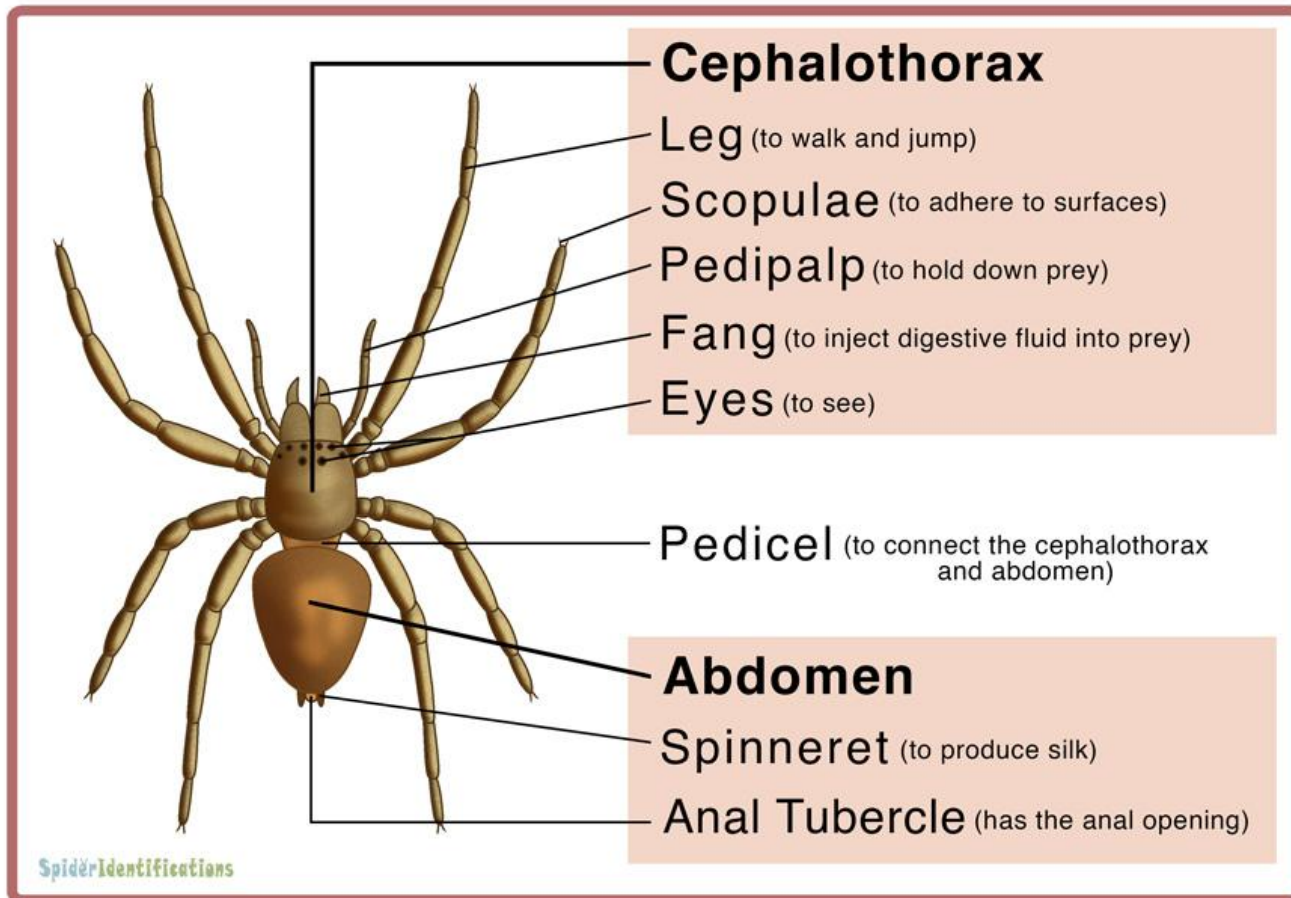




What information can we learn from this text?

Parts of a Spider

What information can we learn from this text?



The Body of a Spider

A spider's body has two parts. One is the cephalothorax. A spider's eight legs are attached to the cephalothorax. There are four legs on each side. The spider's eyes and mouth are also on this forward body part. Spiders have eight eyes, two very large front eyes to get a clear picture and judge distance. The extra side eyes to detect when something is moving. Spiders have fangs but not teeth for chewing. They drink their food!

The second body part is the abdomen. The lungs are found in the abdomen. Spider bodies are very different from human ones.

What information can we learn from this text?